

HDR

HDR Architecture, Inc.

8404 Indian Hills Drive | Omaha, Nebraska 68114-4049 | 402.399.1000

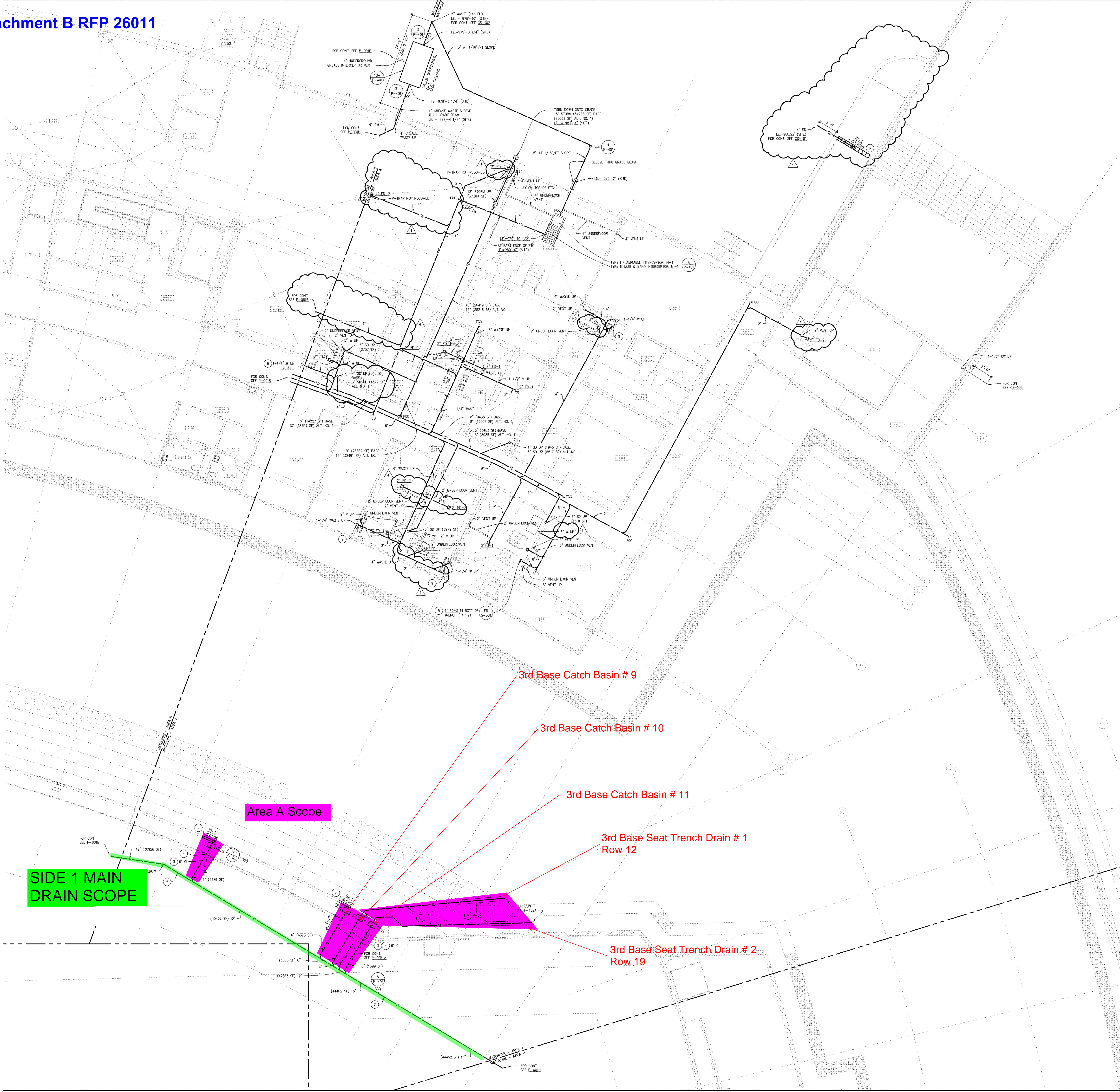
POPULOUS™

300 WYANDOTTE, SUITE 300
KANSAS CITY, MO. 64105
(816)221-1500

DLR Group

Architecture
Engineering
Planning
Interiors

400 Essex Court Regency Park, Omaha, NE 68114-3778
tel: 402.953.4100 fax: 402.953.5747
omaha@dlrgrp.com



- PLUMBING PLAN REFERENCED NOTES:
- THIS SECTION OF TRENCH DRAIN SHALL INCLUDE ONLY THE JAY R. SMITH MODEL 1000-1 SECTION WITH END CAPS AND GRATE. TRENCH DRAIN SHALL BE INSTALLED IN A CONCRETE RECESSE/DEPRESSION AS SHOWN ON STRUCTURAL DETAIL 16/P-302. TOP OF TRENCH DRAIN GRATE SHALL BE FLUSH WITH TOP OF DEPRESSION CONCRETE TRENCH.
 - TRENCHING, BEDDING & BACKFILLING FOR THE INSTALLATION OF UNDERGROUND PLASTIC STORM SEWER PIPING SHALL BE INSTALLED PER DETAIL 16/P-401.
 - PROVIDE CAST IRON PIPING MATERIAL TO A POINT 4'-0" BEFORE LOWER BOWL/BOGOUT/CAMERA WELL/RETAINING WALL AND THEN TRANSITION TO PLASTIC PIPE.
 - INVERT ELEVATION OF PIPE BELOW FOOTING IS 973'-0" (SITE).
 - COORDINATE SIZE OF TRENCH DIMENSIONS WITH GENERAL. CONTRACTOR AND OWNER/EQUIPMENT SUPPLIER. TRENCH DIMENSIONS SHALL BE 7'-0" LONG X 1'-0" WIDE X 2'-0" DEEP.
 - SEE DETAIL 17/P-401 FOR ALL PIPING INSTALLED UNDER THE LOWER BOWL SEATING CONCRETE SLAB AND WITHIN THE NON-SUPPORTIVE FILL PLANS). COORDINATE LOCATIONS AND HAVE GENERAL CONTRACTOR PROVIDE WEE WALL NOTCH-OUT OR PIPE SLEEVE AS REQUIRED THAT ALLOWS FOR SETTLEMENT OF WEE WALL WITHOUT DAMAGE TO PIPE.
 - UNDERFLOOR STORM PIPING IS LOCATED OVER WEE WALL (SEE STRUCTURAL PLANS). COORDINATE LOCATIONS AND HAVE GENERAL CONTRACTOR PROVIDE WEE WALL NOTCH-OUT OR PIPE SLEEVE AS REQUIRED THAT ALLOWS FOR SETTLEMENT OF WEE WALL WITHOUT DAMAGE TO PIPE.
 - THIS COMPLETE SECTION OF TRENCH DRAIN SHALL BE JAY R. SMITH MODEL 2720-100 AND SHALL INCLUDE ONE "A" SECTION AND EIGHT "B" SECTIONS WITH TWO END PLATES. LOCATE THE "A" SECTION WITH SEGMENT BUCKETS IN THE CENTER WITH FOUR "B" SECTIONS ON BOTH SIDES OF THE "A" SECTION. TRENCH DRAIN SHALL BE INSTALLED IN A CONCRETE ENCASMENT AS SHOWN ON STRUCTURAL DETAIL 02/25-306. TOP OF TRENCH DRAIN GRATE SHALL BE FLUSH WITH FINISHED FLOOR ELEVATION.
 - OFFSET WASTE PIPING ROUGH-IN FOR ADA ACCESSIBLE LAVATORY, L-3, FROM CENTERLINE OF FUTURE TO COMPLY WITH P-TRAP CONFIGURATION PER DETAIL 16/P-401.

PROJECT DOCUMENTS FOR

MECA
OMAHA

Omaha Baseball Stadium
1200 Webster Street
Omaha, NE 68101

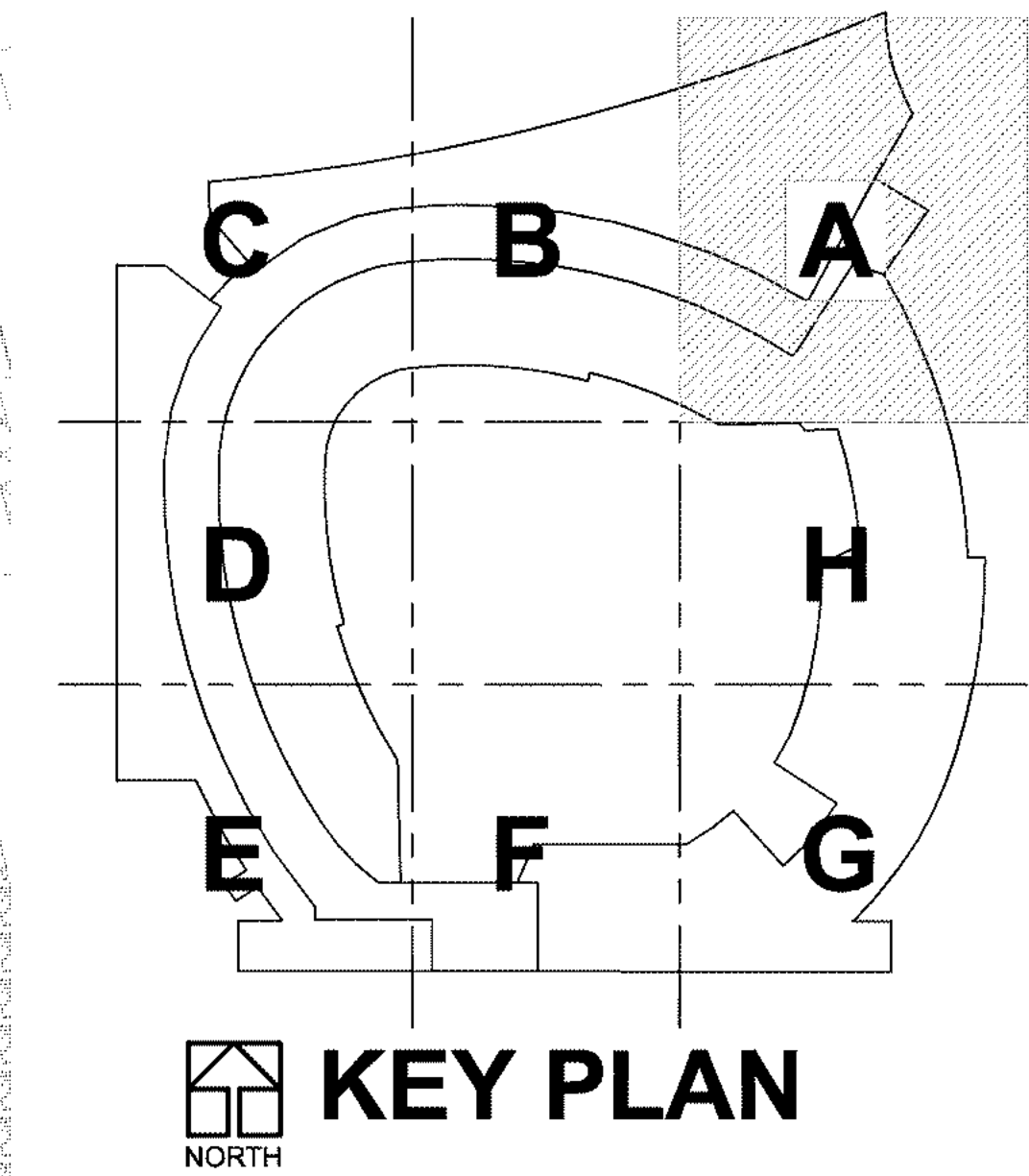
MARK	DATE	DESCRIPTION
1	OCT 05 2009	ISSUED
2	MAY 20 2009	REISSUED PER AD-6, BR-3
3	APR 20 2009	REISSUED PER AD-3, BR-3
1	APR 08 2009	REISSUED PER AD-2, BR-3
1	MAY 18 2009	ISSUED PER BR-3
PROJECT NUMBER 4448208777		
ISSUED BY HDR ARCHITECTURE		
PROJECT PRINCIPAL B. CARPENTER		
PROJECT MANAGER J. DINEEN		



AREA A
UNDERGROUND
PLUMBING PLAN

SCALE 1/8"=1'-0"

P-001A





8404 Indian Hills Drive | Omaha, Nebraska 68114-4049 | 402.399.1000

300 WYANDOTTE, SUITE 300
KANSAS CITY, MO. 64105
(816)221-1500



Architecture
Engineering
Planning
Interiors

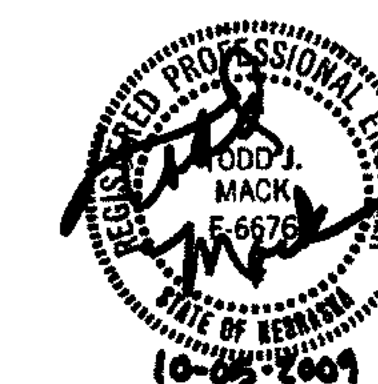
400 Essex Court Regency Park, Omaha, NE 68114-3778
tel: 402/393-4100 fax: 402/393-8747
omaha@dlrgroup.com

PROJECT DOCUMENTS FOR

MECA
• O M A H A

Omaha Baseball Stadium
1200 Webster Street
Omaha, NE 68101

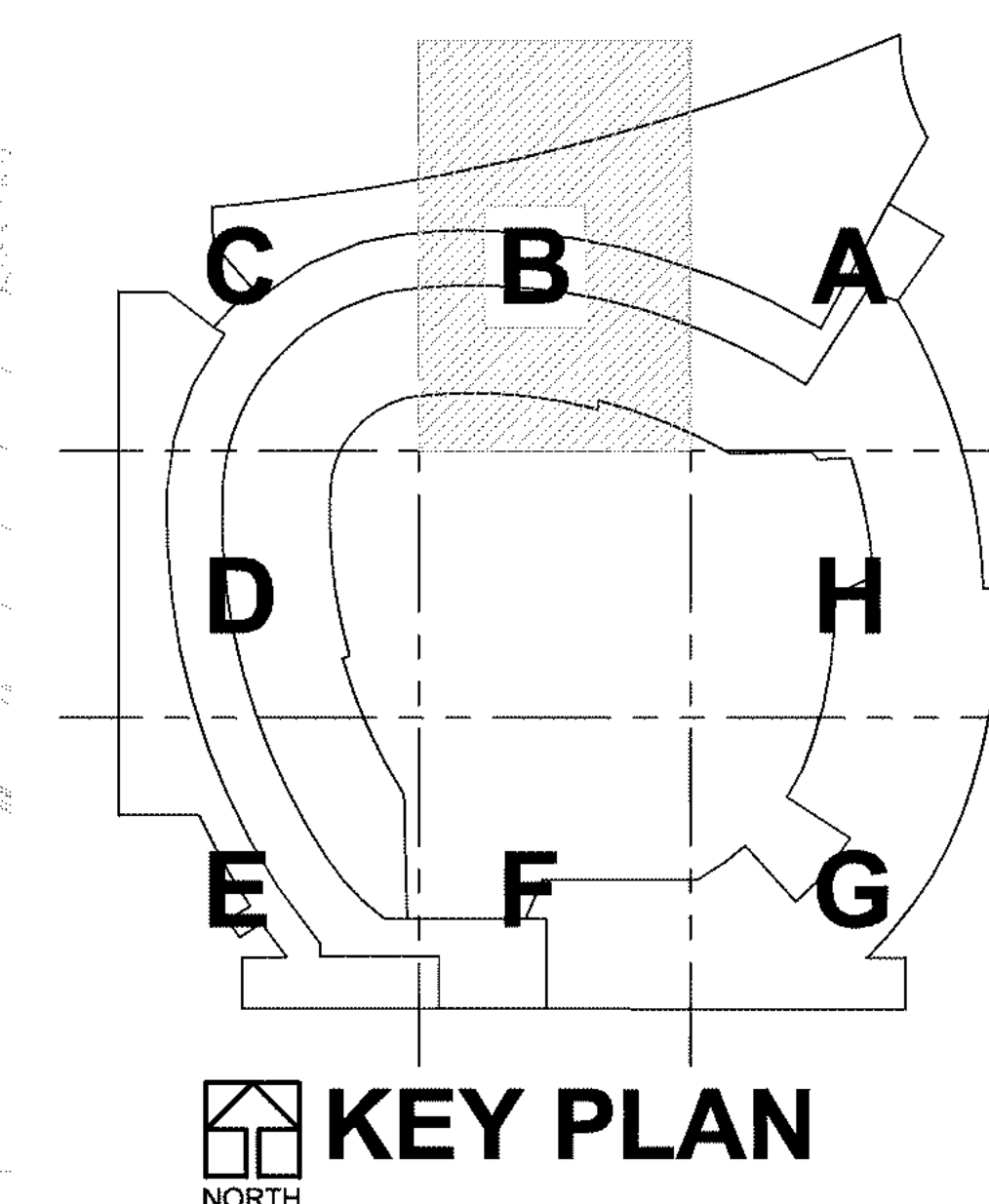
5	SEPT. 29, 2010	RFI #1559
6	MAR. 10, 2010	RFI #7707
7	MAR. 12, 2010	RFI #605
8	CT 05, 2009	CH#3
9	MAY 14, 2010	RESUBMIT PER G1 #12, B3
10	JUNE 17, 2010	RESUBMIT PER AD-5, B3
11	MAY 20, 2010	RESUBMIT PER AD-5, B3
12	APR. 20, 2010	RESUBMIT PER AD-3, B3
1	APR. 08, 2010	RESUBMIT PER AD-2, B3
2	MAY 18, 2010	STATUS PER B-3
MARK	DATE	DESCRIPTION
PROJECT NUMBER: HGR-4448080777, DLR 10 0142 00		
ISSUED BY: HON ARCHITECTURE		
PROJECT FINANCIAL: B. CARPENTER		
PROJECT MANAGER: J. OJENEN		



AREA B
UNDERGROUND
PLUMBING PLAN

SCALE 1/8"=1'-0"

P-001B



SIDE 1 MAIN DRAIN SCOPE

Area B1 Scope

Area B2 Scope -

3rd Base Seat Catch Basin # 1

3rd Base Catch Basin # 1

3rd Base Seat Catch Basin # 2

3rd Base Catch Basin # 7

3rd Base Catch Basin # 2

3rd Base Catch Basin # 3

3rd Base Catch Basin # 4

3rd Base Catch Basin # 5

3rd Base Catch Basin # 6

MATCHLINE - AREA 1

MATCHLINE - AREA 1

C:\PROJECTS\10-08142-00\dwg\PL\zz-pl0b.dwg
 Oct 04, 2009 11:18pm - trushau

PLUMBING PLAN REFERENCED NOTES:

1. THIS SECTION OF TRENCH DRAIN ID-1 SHALL INCLUDE ONLY THE JAY R. SMITH MODEL 9930-1 SECTION WITH END CAPS AND GRATE. TRENCH DRAIN SHALL BE INSTALLED IN A CONCRETE RECESS/DEPRESSION AS SHOWN ON STRUCTURAL DETAIL 16/5-317. TOP OF TRENCH DRAIN GRATE SHALL BE FLUSH WITH TOP OF DEPRESSION CONCRETE TRENCH.
2. THIS COMPLETE SECTION OF TRENCH DRAIN ID-2 SHALL INCLUDE THE ONE SECTION OF JAY R. SMITH MODEL 9930-1 AND THE 9933 CATCH BASIN WITH SEGMENT BUCKET AND END CAPS. TOP OF TRENCH DRAIN GRATE SHALL BE FLUSH WITH FINISH FLOOR.
3. THIS COMPLETE SECTION OF TRENCH DRAIN ID-3 SHALL INCLUDE TWO SECTIONS OF JAY R. SMITH MODEL 9930-1, TWO SECTIONS OF MODEL 9930-2 AND THE 9933 CATCH BASIN WITH SEGMENT BUCKET AND END CAPS. LOCATE THE CATCH BASIN IN THE CENTER WITH SECTIONS 9930-1 AND 9930-2 ON BOTH SIDES OF THE CATCH BASIN SLOPING TOWARDS THE CATCH BASIN. TOP OF TRENCH DRAIN GRATE SHALL BE FLUSH WITH FINISH FLOOR.
4. LOCATE FLOOR SINK UNDER ICE MACHINE. COORDINATE WITH GENERAL CONTRACTOR AND OWNER/EQUIPMENT SUPPLIER.
5. PROVIDE P-TRAP AT SHOWER DRAIN & INSTALL SHOWER DRAIN GRID STRAINER.
6. BRANCHING, REDUCING & BACKSPLUNG FOR THE INSTALLATION OF UNDERGROUND PLASTIC STORM SEWER PIPING SHALL BE INSTALLED PER DETAIL 16/7-401.
7. PROVIDE CAST IRON PIPING MATERIAL TO A POINT 4'-0" BEYOND LOWER ROW PLUG/CUT/CAMERA WELL RETAINING WALL AND THEN TRANSITION TO PLASTIC PIPE.
8. INVERT ELEVATION OF PIPE BELOW FOOTING IS 971'-4" (SITE).
9. 6" WASTE UP FOR STANDPIPE TO ELEVATOR SUMP PUMP DISCHARGE. PROVIDE P-TRAP AND 3" VENT.
10. OFFSET WASTE PIPING ROUGH-IN FOR ADA ACCESSIBLE LAVATORY, L-3, FROM CENTERLINE OF FUTURE TO COMPLY WITH P-TRAP CONFIGURATION PER DETAIL 16/7-401.

HDR

HDR Architecture, Inc.

8404 Indian Hills Drive | Omaha, Nebraska 68114-4049 | 402.399.1000

POPULOUS™

300 WYANDOTTE, SUITE 300
KANSAS CITY, MO. 64105
(816)221-1500

DLR Group

Architecture
Engineering
Planning
Interiors

400 Essex Court Regency Park, Omaha, NE 68114-3778
tel: 402.953-4100 fax: 402.953-5747
omaha@dlrgroup.com

PROJECT DOCUMENTS FOR

MECA
OMAHA

Omaha Baseball Stadium
1200 Webster Street
Omaha, NE 68101

MARK	DATE	DESCRIPTION
PROJECT NUMBER	HDR-4448208777, DLR 10.0142.00	
ISSUED BY	HDR ARCHITECTURE	
PROJECT PRINCIPAL	S. CARPENTER	
PROJECT MANAGER	J. DWEN	

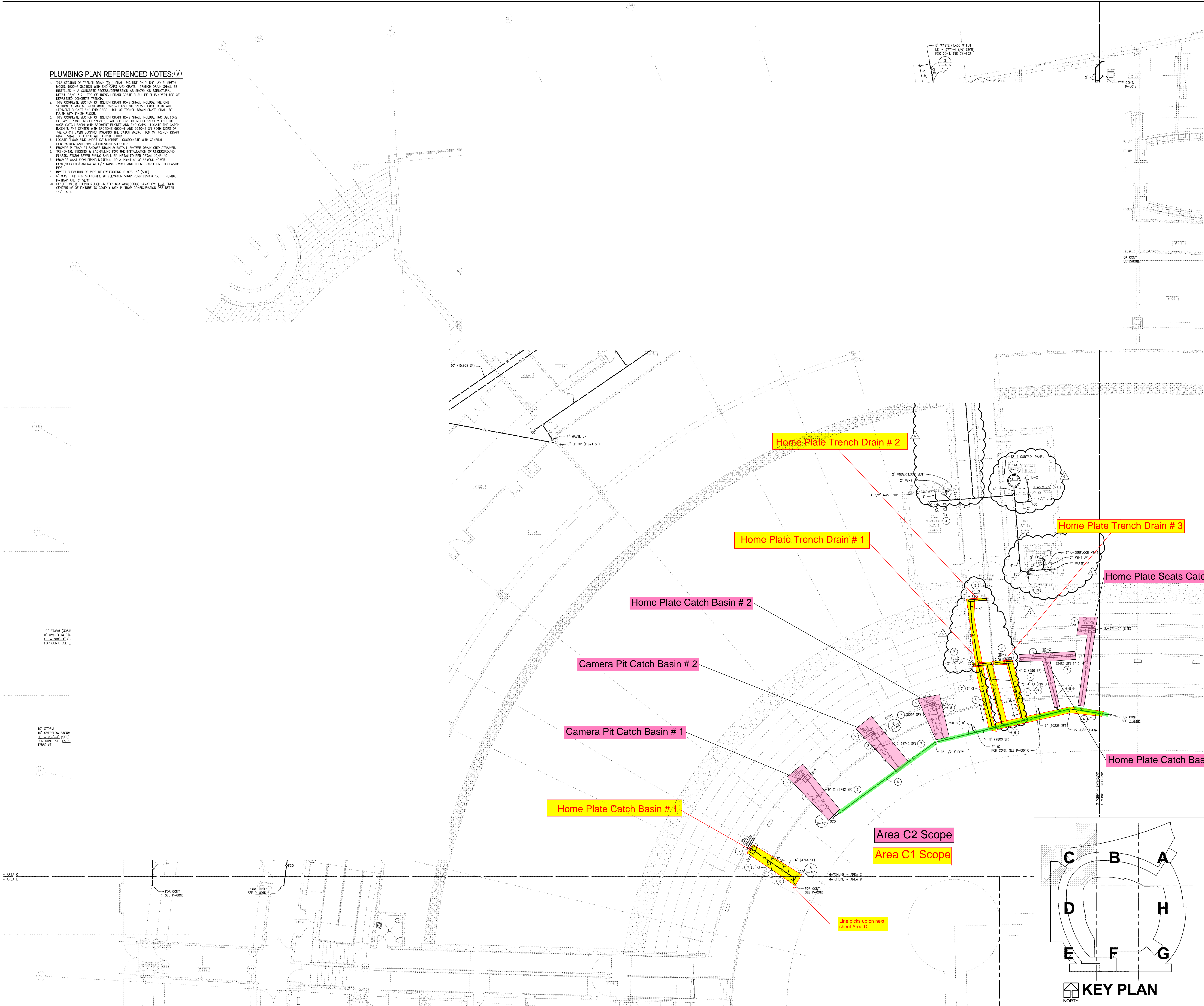
1	APR 18, 2010	CI BP-3
2	OCT 05, 2009	CI BP-3
3	JULY 15, 2009	REISSUED PER CI #12, BP-3
4	JUNE 17, 2009	REISSUED PER AD-3, BP-3
5	MAY 20, 2009	REISSUED PER AD-3, BP-3
6	PR 20, 2009	REISSUED PER AD-3, BP-3
7	PR 06, 2009	REISSUED PER AD-2, BP-3
8	MAY 18, 2009	ISSUED PER BP-3

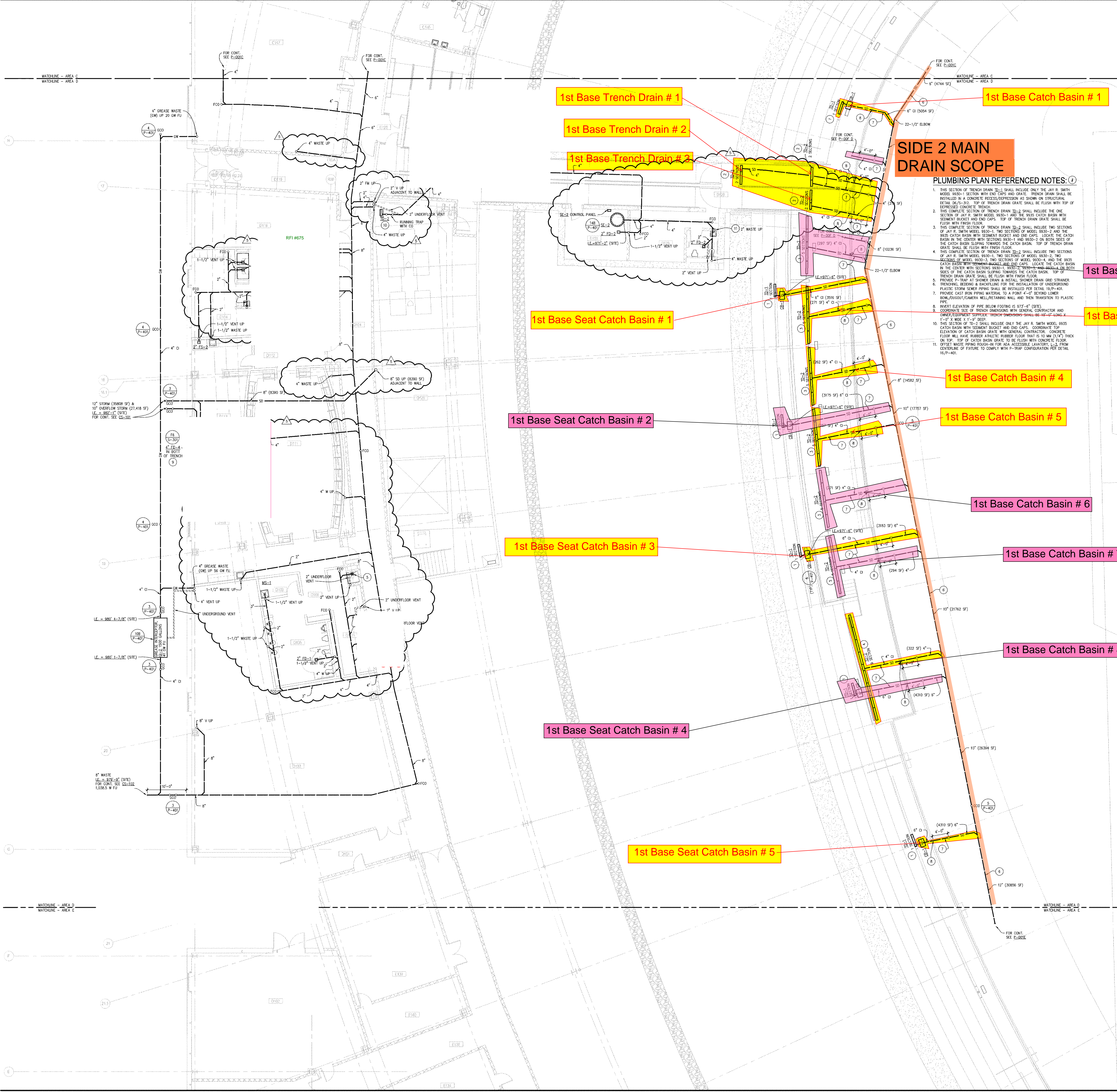


AREA C
UNDERGROUND
PLUMBING PLAN

SCALE 1/8"=1'-0"

P-001C



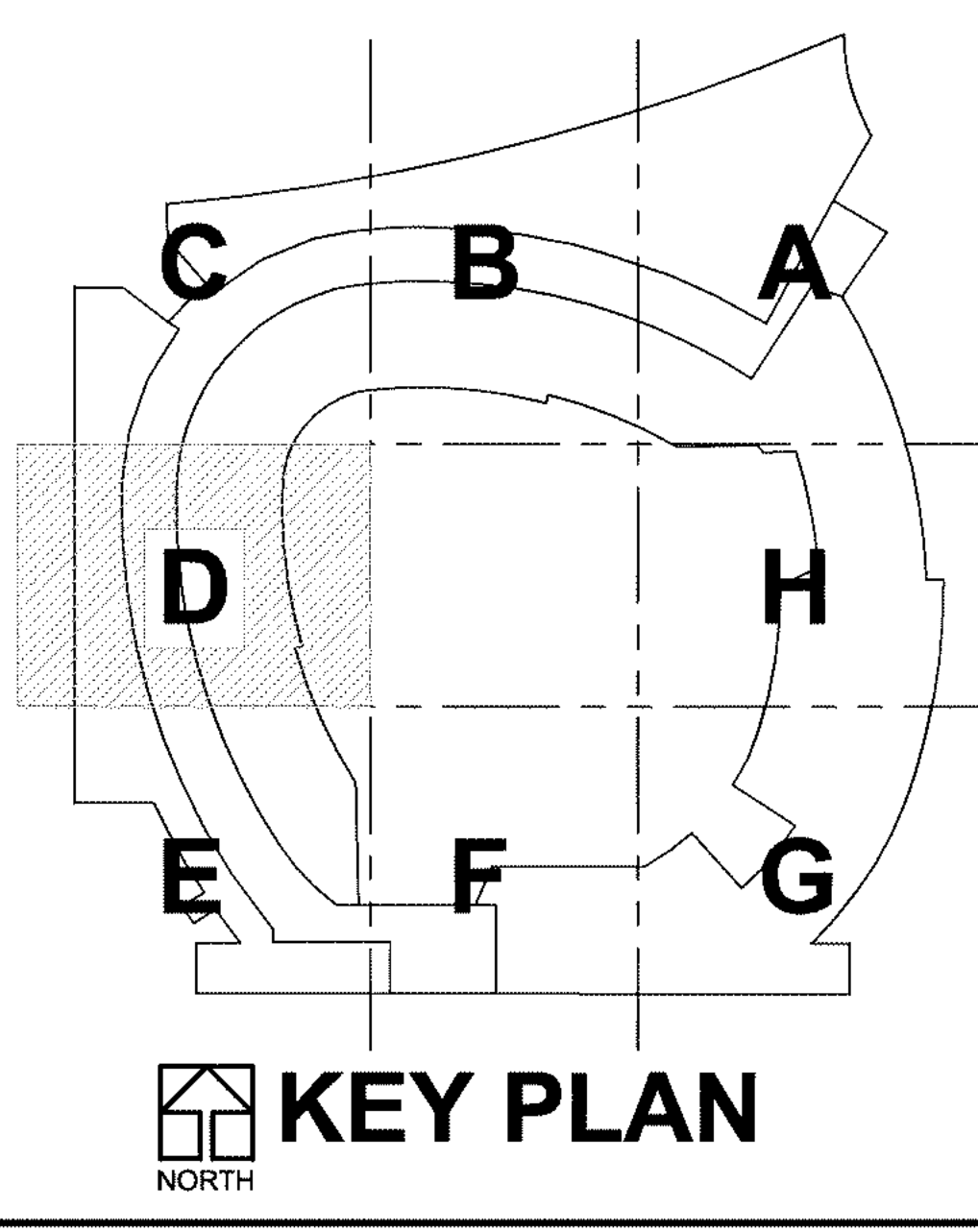


SIDE 2 MAIN DRAIN SCOPE

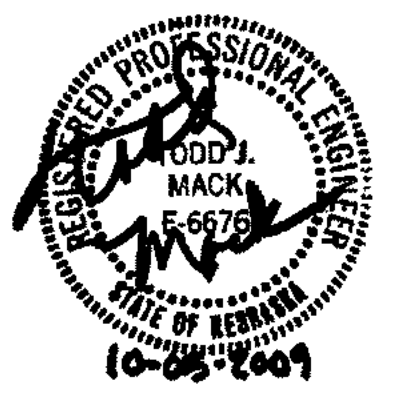
- PLUMBING PLAN REFERENCED NOTES:**
1. THIS SECTION OF TRENCH DRAIN TO-1 SHALL INCLUDE ONLY THE JAY R. SMITH MODEL 9830-1 SECTION WITH END CAPS AND GRATE. TRENCH DRAIN SHALL BE INSTALLED IN A CONCRETE RECESS/DEPRESSION AS SHOWN ON STRUCTURAL DETAIL 04-21-01. TOP OF TRENCH DRAIN GRATE SHALL BE FLUSH WITH TOP OF DEPRESSION CONCRETE TRENCH.
 2. THIS COMPLETE SECTION OF TRENCH DRAIN TO-2 SHALL INCLUDE THE ONE SECTION OF JAY R. SMITH MODEL 9830-1 AND THE 9830-2 CATCH BASIN WITH SEWAGE BUCKET AND END CAPS. TOP OF TRENCH DRAIN GRATE SHALL BE FLUSH WITH FINISH FLOOR.
 3. THIS COMPLETE SECTION OF TRENCH DRAIN TO-3 SHALL INCLUDE TWO SECTIONS OF JAY R. SMITH MODEL 9830-1, TWO SECTIONS OF MODEL 9830-2 AND THE 9830-3 CATCH BASIN WITH SEWAGE BUCKET AND END CAPS. LOCATE THE CATCH BASIN IN THE CENTER WITH SECTIONS 9830-1 AND 9830-2 ON BOTH SIDES OF THE CATCH BASIN SLOPING TOWARDS THE CATCH BASIN. TOP OF TRENCH DRAIN GRATE SHALL BE FLUSH WITH FINISH FLOOR.
 4. THIS COMPLETE SECTION OF TRENCH DRAIN TO-4 SHALL INCLUDE TWO SECTIONS OF JAY R. SMITH MODEL 9830-1, TWO SECTIONS OF MODEL 9830-2, TWO SECTIONS OF MODEL 9830-3, TWO SECTIONS OF MODEL 9830-4 AND THE 9830-5 CATCH BASIN WITH SEWAGE BUCKET AND END CAPS. LOCATE THE CATCH BASIN IN THE CENTER WITH SECTIONS 9830-1, 9830-2, 9830-3 AND 9830-4 ON BOTH SIDES OF THE CATCH BASIN SLOPING TOWARDS THE CATCH BASIN. TOP OF TRENCH DRAIN GRATE SHALL BE FLUSH WITH FINISH FLOOR.
 5. PROVIDE P-TRAP AT SHOWER DRAIN AND INSTALL SHOWER DRAIN DRY STRAINER.
 6. FLOORING, BEDDING & BACKFILLING FOR THE INSTALLATION OF UNDERGROUND PLASTIC STORM SEWER PIPING SHALL BE INSTALLED PER DETAIL 19-P-401.
 7. PROVIDE CAST IRON PIPING MATERIAL TO A POINT 4'-0" BEYOND LOWER BOWL/OUTLET/CAMERA WELL/RETAINING WALL AND THEN TRANSITION TO PLASTIC PIPE.
 8. INVERT ELEVATION OF PIPE BELOW FOOTING IS 972'-4" (SITE).
 9. COORDINATE SIZE OF TRENCH DIMENSIONS WITH GENERAL CONTRACTOR AND OWNER/EQUIPMENT SUPPLIER. TRENCH DIMENSIONS SHALL BE 10'-0" LONG X 1'-0" X 2' DEEP & 1'-0" WIDE.
 10. THIS SECTION OF TO-2 SHALL INCLUDE ONLY THE JAY R. SMITH MODEL 9830 CATCH BASIN WITH SEWAGE BUCKET AND END CAPS. COORDINATE TOP ELEVATION OF CATCH BASIN GRATE WITH GENERAL CONTRACTOR. CONCRETE FLOOR WILL HAVE MINIMUM 4" THICK RIGID FLOOR THAT IS 10' DIA (1'-0" THICK ON TOP. TOP OF CATCH BASIN GRATE TO BE FLUSH WITH CONCRETE FLOOR.
 11. OFFSET WASTE PIPING RUN-IN FOR AN ACCESSIBLE LAVATORY L-3 FROM CENTERLINE OF FIXTURE TO COMPLY WITH P-TRAP CONFIGURATION PER DETAIL 16-P-401.

Area D1 Scope

Area D2 Scope



MARK	DATE	DESCRIPTION
1	MAR 8, 2010	RFI #675
2	NOV 24, 2009	RFI #668
3	APR 13, 2010	CI #55
4	APR 6, 2010	CI #58
5	NOV 05, 2009	CI #52
6	OCT 05, 2009	CI #53
7	JUNE 17, 2009	REISSUED PER AD-3, BP-3
8	MAY 20, 2009	REISSUED PER AD-3, BP-3
9	APR 20, 2009	REISSUED PER AD-3, BP-3
10	APR 08, 2009	REISSUED PER AD-3, BP-3
11	MAR 18, 2009	ISSUED PER AD-3
MARK	DATE	DESCRIPTION
PROJECT NUMBER	HDR-4446080777	DLR 10.0142.00
ISSUED BY	HDR ARCHITECTURE	
PROJECT PRINCIPAL	S. CARPENTER	
PROJECT MANAGER	J. DWINE	



MATCH
MATCH

F

B

D

HDR

HDR Architecture, Inc.

8404 Indian Hills Drive | Omaha, Nebraska 68114-4049 | 402.399.1000

POPULOUS™

300 WYANDOTTE, SUITE 300
KANSAS CITY, MO. 64105
(816)221-1500

DLR Group

Architecture
Engineering
Planning
Interiors

400 Essex Court Regency Park, Omaha, NE 68114-3778
tel: 402/953-4100 fax: 402/953-5747
omaha@dlrgroup.com

SIDE 2 MAIN
DRAIN SCOPE

1st Base Seat Catch Basin # 6

Area E Scope -

1st Base Trench Drain # 4
Row 15

1st Base Seat Catch Basin # 7

1st Base Seat Catch Basin # 8

1st Base Seat Catch Basin # 9

1st Base Trench Drain # 5
Row 22

PLUMBING PLAN REFERENCED NOTES: ①

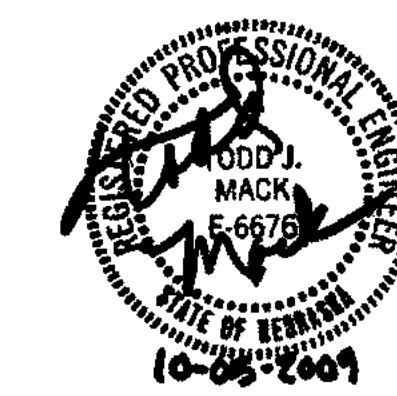
1. THIS SECTION OF TRENCH DRAIN (TD-1) SHALL INCLUDE ONLY THE JAY R. SMITH MODEL 9930-1 SECTION WITH END CAPS AND GRATE. TRENCH DRAIN SHALL BE INSTALLED IN A CONCRETE RECESS/DEPRESSION AS SHOWN ON STRUCTURAL DETAIL 36/5-312. TOP OF TRENCH DRAIN GRATE SHALL BE FLUSH WITH TOP OF DEPRESSION CONCRETE TRENCH.
2. TRENCHING BEYOND A BACK FILLING FOR THE INSTALLATION OF UNDERGROUND PLASTIC STORM SEWER PIPING SHALL BE INSTALLED PER DETAIL 10/9-401.
3. PROVIDE CAST IRON PIPING MATERIAL TO A POINT 4'-0" BEYOND LOWER DOWN/DOWN/OWNER BELT/PARTING WALL AND THEN TRANSITION TO PLASTIC PIPE.
4. PROVIDE P-TRAP AT SHOWER DRAIN AND INSTALL SHOWER DRAIN GRID STRAINER.
5. INVERT ELEVATION OF PIPE BELOW FOOTING IS 973'-8" (SITE).
6. 8" WASTE UP FOR SHOWER TO ELEVATOR SUMP PUMP DISCHARGE. PROVIDE P-TRAP AND 2" VENT.
7. LOCATE FLOOR ONLY OVER SEE MACHINE.
8. SEE DETAIL 17/9-401 FOR ALL PIPING INSTALLED UNDER THE LOWER BOWL SEATING CONCRETE SLAB AND WITHIN THE WING-SUPPORTIVE TALL.
9. UNDERFLOOR STORM PIPING IS LOCATED OVER MSE WALL (SEE STRUCTURAL PLANS). COORDINATE LOCATIONS AND HAVE GENERAL CONTRACTOR PROVIDE MSE WALL NOTCH-OUT OR PIPE SLEEVE AS REQUIRED THAT ALLOWS FOR SETTLEMENT OF MSE WALL WITHOUT DAMAGE TO PIPE.
10. OFFSET WASTE PIPING DISCHARGE FOR ADA ACCESSIBLE LAVATORY, L-3 FROM CENTERLINE OF FUTURE TO COMPLY WITH P-TRAP CONFIGURATION PER DETAIL 16/9-401.

PROJECT DOCUMENTS FOR

MECA
OMAHA

Omaha Baseball Stadium
1200 Webster Street
Omaha, NE 68101

MARK	DATE	DESCRIPTION
1	DEC 17, 2009	RFP #444
2	OCT 27, 2009	RFP #243
3	NOV 08, 2009	CD #2
4	OCT 05, 2009	CH#3
5	JULY 15, 2009	REISSUED PER CD #2, BP-3
6	MAY 20, 2009	REISSUED PER AD-2, BP-3
7	APR 20, 2009	REISSUED PER AD-3, BP-3
8	APR 08, 2009	REISSUED PER AD-2, BP-3
9	MAR 19, 2009	ISSUED PER BP-3



AREA E
UNDERGROUND
PLUMBING PLAN

SCALE 1/8"=1'-0"

P-001E



KEY PLAN



HDR Architecture, Inc.

8404 Indian Hills Drive | Omaha, Nebraska 68114-4049 | 402.399.1000

POPULOUS™

300 WYANDOTTE, SUITE 300
KANSAS CITY, MO. 64105
(816)221-1500

DLR Group
Architecture
Engineering
Planning
Interiors

400 Essex Court Regency Park, Omaha, NE 68114-3778
tel: 402.953-4100 fax: 402.953-5747
omaha@dlrgroup.com

PROJECT DOCUMENTS FOR

MECA
OMAHA

Omaha Baseball Stadium
1200 Webster Street
Omaha, NE 68101

MARK	DATE	DESCRIPTION
6	OCT. 05, 2009	CH#3
4	JULY 15, 2009	REISSUED PER CH#2 BR-3
3	MAY 20, 2009	REISSUED PER AD-2 BR-3
2	APR. 20, 2009	REISSUED PER AD-3 BR-3
1	MAY 06, 2009	REISSUED PER AD-2 BR-3
1	MAY 19, 2009	ISSUED PER BR-3
PROJECT NUMBER 4448208777		
ISSUED BY HDR ARCHITECTURE		
PROJECT PRINCIPAL S. CARPENTER		
PROJECT MANAGER J. DINEEN		



AREA F
UNDERGROUND
PLUMBING PLAN

SCALE 1/8"=1'-0"

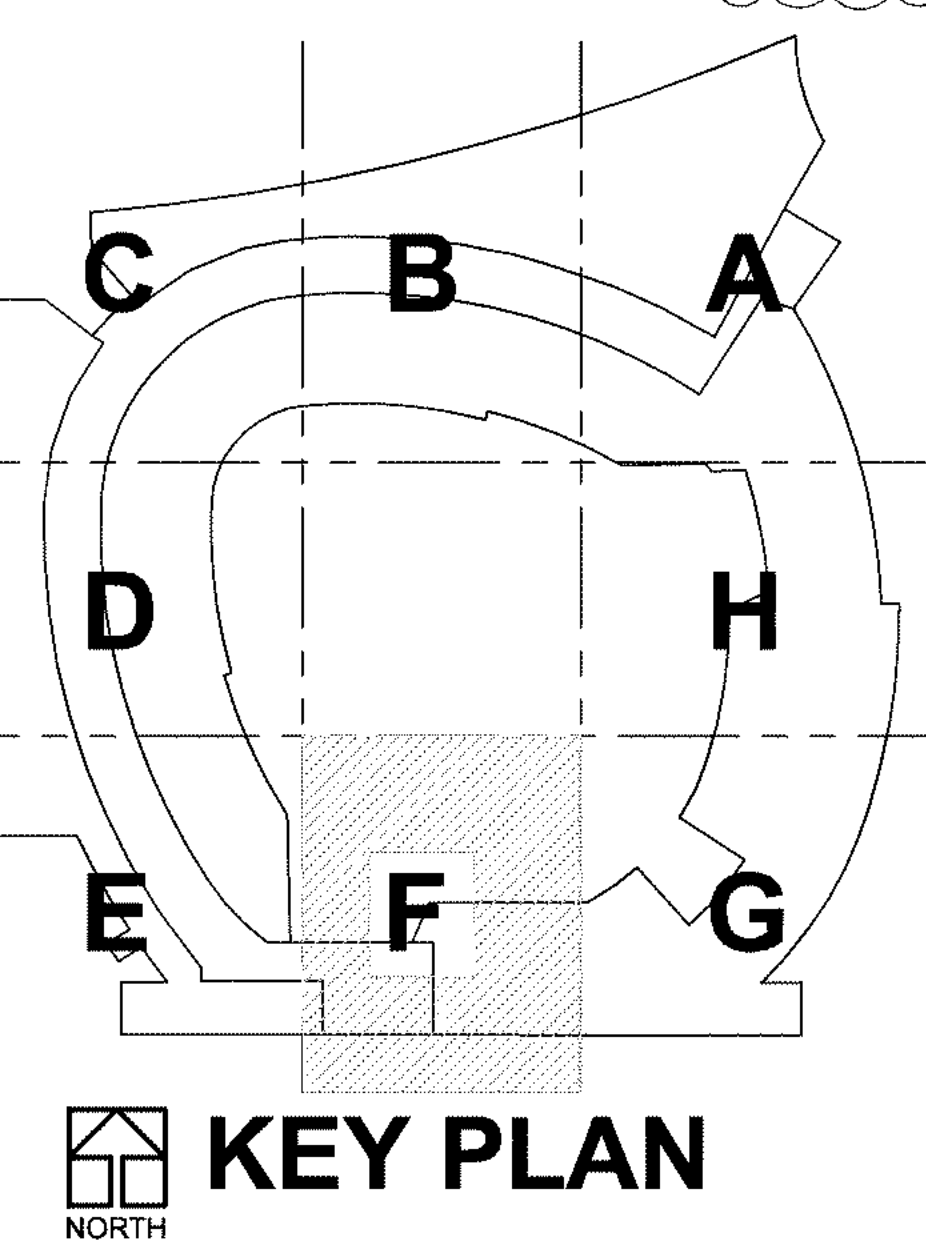
P-001F

PLUMBING PLAN REFERENCED NOTES:

1. THIS SECTION OF TRENCH DRAIN (30-3) SHALL INCLUDE ONLY THE 6" SMITH MODEL 9000-1 SECTION WITH 240 CPS AND GRATE. TRENCH DRAIN SHALL BE INSTALLED IN A CONCRETE RECESS/DEPRESSION AS SHOWN ON STRUCTURAL DETAIL DWG-312. TOP OF TRENCH DRAIN GRATE SHALL BE FLUSH WITH TOP OF DEPRESSION CONCRETE TRENCH.
2. TRENCHING, BEDDING & BACKFILLING FOR THE INSTALLATION OF UNDERGROUND PLASTIC STORM SEWER PIPING SHALL BE INSTALLED PER DETAIL 19-7-401.
3. PROVIDE CAST IRON PIPING MATERIAL TO A POINT 4'-0" BEYOND LOWER ROW-ROCKOUT/CAMERA WELL/PELLETING WALL AND THEN TRANSITION TO PLASTIC PIPE.
4. INVERT ELEVATION OF PIPE BELOW FOOTING IS 973'-4" (SITE).
5. GRADE CLEANOUT: TYPICAL INSTALLATION AS SHOWN ON DETAIL 4-7-401 EXCEPT CLEANOUT IS LOCATED IN GRASS. PROVIDE 18"X18"X12" THICK CONCRETE PAD. CENTER CLEANOUT IN PAD WITH COVER FLUSH WITH TOP OF PAD.

**SIDE 2 MAIN
DRAIN SCOPE**

Area F Scope -



KEY PLAN
NORTH

NO CHANGES THIS SHEET
ISSUED FOR CONFORMANCE

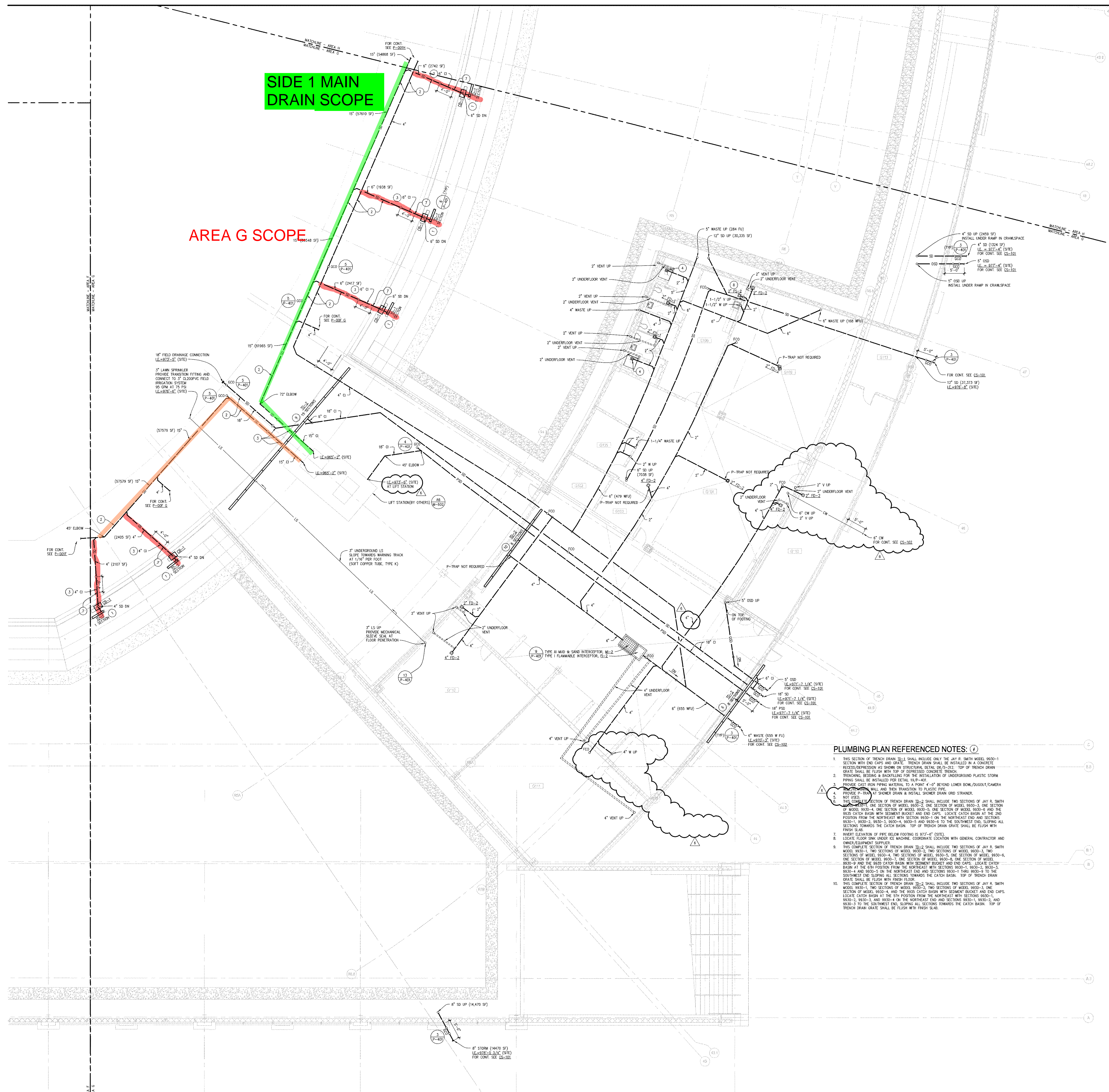
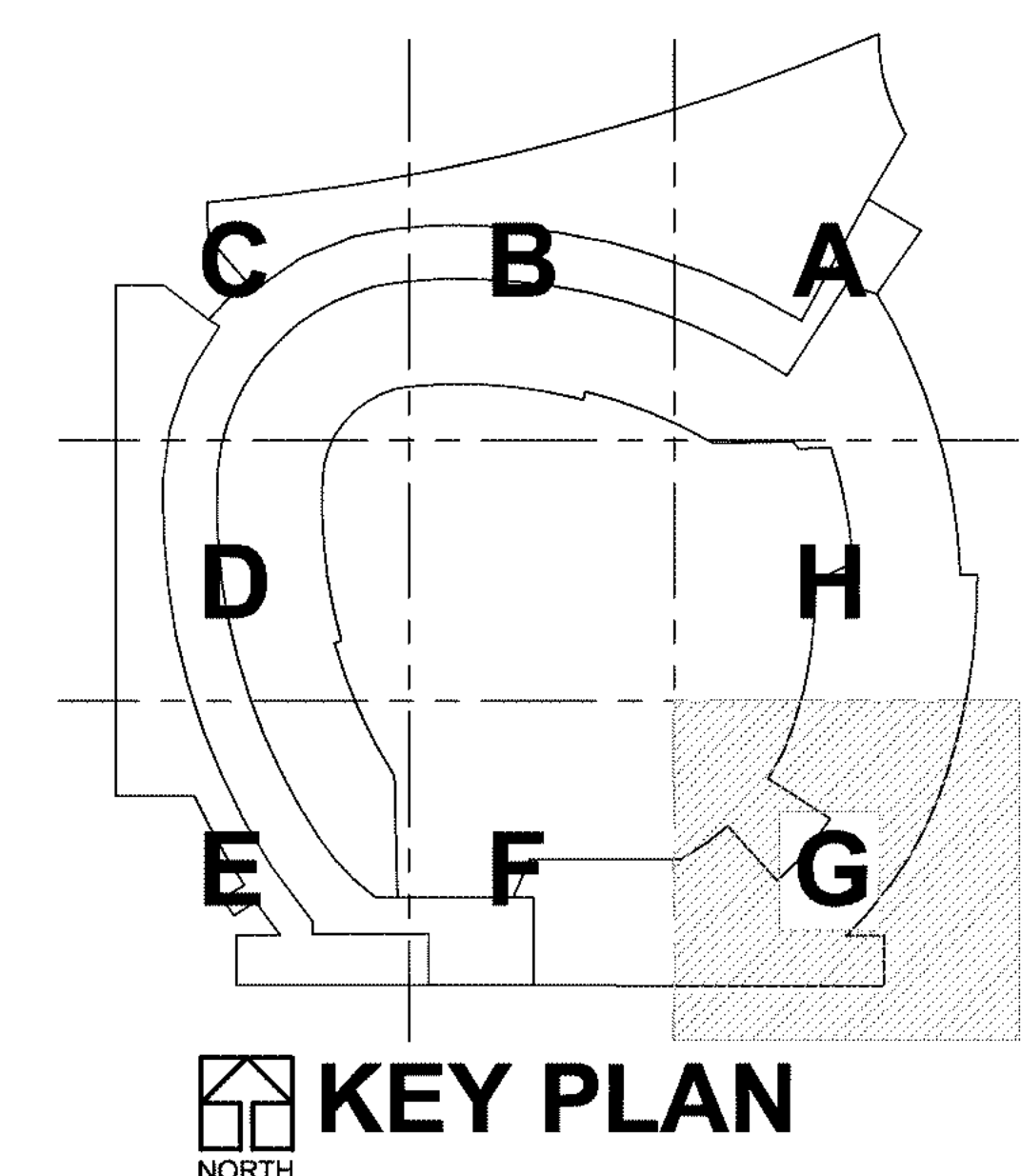
MARK	DATE	DESCRIPTION
1	MAY 18, 2009	ISSUED PER AD-3, BP-3
2	APR 20, 2009	ISSUED PER AD-3, BP-3
3	MAY 20, 2009	ISSUED PER AD-3, BP-3
4	JUNE 17, 2009	ISSUED PER CI #12, BP-3
5	JULY 15, 2009	ISSUED PER CI #12, BP-3
6	OCT. 05, 2009	CH-3
PROJECT NUMBER: HDR-4448208/777, DLR 101642.00		
ISSUED BY: HDR ARCHITECTURE		
PROJECT PRINCIPAL: J. CARPENTER		
PROJECT MANAGER: J. DINEEN		



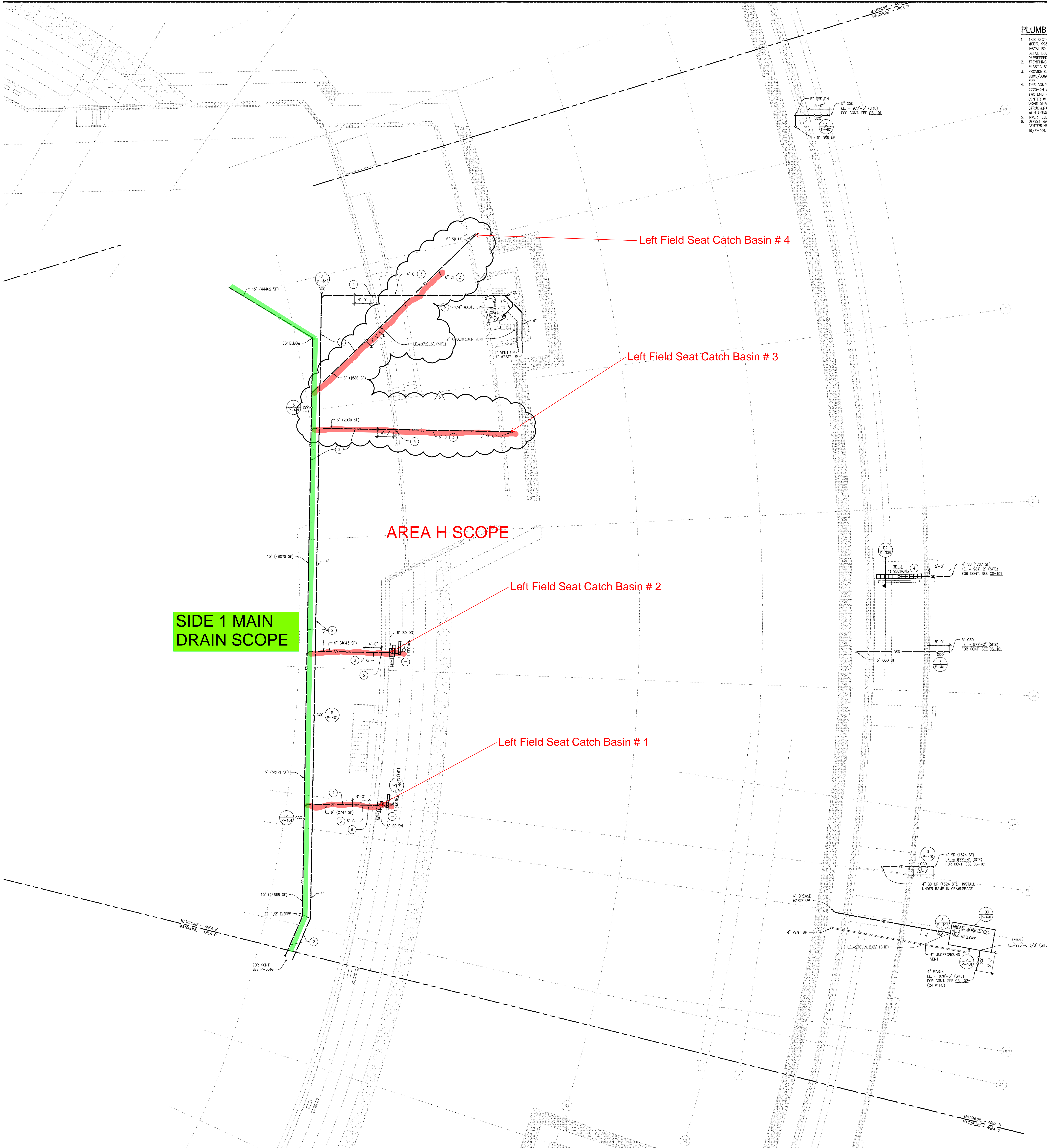
**AREA G
UNDERGROUND
PLUMBING PLAN**

SCALE: 1/8"=1'-0"

P-001G



- PLUMBING PLAN REFERENCED NOTES:**
- THIS SECTION OF TRENCH DRAIN ID-1 SHALL INCLUDE ONLY THE JAY R. SMITH MODEL 9930-1 SECTION WITH END CAPS AND GRATE. TRENCH DRAIN SHALL BE INSTALLED IN A CONCRETE PROCESS/DEPRESSION AS SHOWN ON STRUCTURAL DETAIL DG-5-212. TOP OF TRENCH DRAIN GRATE SHALL BE FLUSH WITH TOP OF EXPOSED CONCRETE. TRENCH DRAINING, BEDDING & BACKFILLING FOR THE INSTALLATION OF UNDERGROUND PLASTIC STORM PIPING SHALL BE INSTALLED PER DETAIL 16P-401.
 - PROVIDE CAST IRON PIPING MATERIAL TO A POINT 4'-0" BEYOND LOWER BOW/DOOR/CAMERA ROOM/STAIR WALL AND THEN TRANSITION TO PLASTIC PIPE.
 - PROVIDE P-TRAP AT SHOWER DRAIN & INSTALL SHOWER DRAIN GRID STRAINER.
 - NOT USED.
 - THIS COMPLETE SECTION OF TRENCH DRAIN ID-2 SHALL INCLUDE TWO SECTIONS OF JAY R. SMITH MODEL 9930-1, TWO SECTIONS OF MODEL 9930-2, TWO SECTIONS OF MODEL 9930-3, TWO SECTIONS OF MODEL 9930-4, ONE SECTION OF MODEL 9930-5, ONE SECTION OF MODEL 9930-6 AND THE 9930 CATCH BASIN WITH SEGMENT BUCKET AND END CAPS. LOCATE CATCH BASIN AT THE 6TH POSITION FROM THE NORTHEAST WITH SECTIONS 9930-1, 9930-2, 9930-3, 9930-4 AND 9930-5 ON THE NORTHEAST END AND SECTIONS 9930-6 TO THE SOUTHWEST END SLOPING ALL SECTIONS TOWARDS THE CATCH BASIN. TOP OF TRENCH DRAIN GRATE SHALL BE FLUSH WITH FINISH SLAB.
 - INVERT ELEVATION OF PIPE BELOW FOOTING IS 973'-6" (SITE).
 - LOCATE FLOOR DRAIN UNDER ICE MACHINE. COORDINATE LOCATION WITH GENERAL CONTRACTOR AND OWNER/EQUIPMENT SUPPLIER.
 - THIS COMPLETE SECTION OF TRENCH DRAIN ID-3 SHALL INCLUDE TWO SECTIONS OF JAY R. SMITH MODEL 9930-1, TWO SECTIONS OF MODEL 9930-2, TWO SECTIONS OF MODEL 9930-3, TWO SECTIONS OF MODEL 9930-4, ONE SECTION OF MODEL 9930-5, ONE SECTION OF MODEL 9930-6, ONE SECTION OF MODEL 9930-7, ONE SECTION OF MODEL 9930-8, ONE SECTION OF MODEL 9930-9 AND THE 9930 CATCH BASIN WITH SEGMENT BUCKET AND END CAPS. LOCATE CATCH BASIN AT THE 6TH POSITION FROM THE NORTHEAST WITH SECTIONS 9930-1, 9930-2, 9930-3, 9930-4 AND 9930-5 ON THE NORTHEAST END AND SECTIONS 9930-6 TO THE SOUTHWEST END SLOPING ALL SECTIONS TOWARDS THE CATCH BASIN. TOP OF TRENCH DRAIN GRATE SHALL BE FLUSH WITH FINISH SLAB.
 - THIS COMPLETE SECTION OF TRENCH DRAIN ID-4 SHALL INCLUDE TWO SECTIONS OF JAY R. SMITH MODEL 9930-1, TWO SECTIONS OF MODEL 9930-2, TWO SECTIONS OF MODEL 9930-3, ONE SECTION OF MODEL 9930-4 AND THE 9930 CATCH BASIN WITH SEGMENT BUCKET AND END CAPS. LOCATE CATCH BASIN AT THE 5TH POSITION FROM THE NORTHEAST WITH SECTIONS 9930-1, 9930-2, 9930-3 AND 9930-4 ON THE NORTHEAST END AND SECTIONS 9930-1, 9930-2, AND 9930-3 TO THE SOUTHWEST END SLOPING ALL SECTIONS TOWARDS THE CATCH BASIN. TOP OF TRENCH DRAIN GRATE SHALL BE FLUSH WITH FINISH SLAB.



PLUMBING PLAN REFERENCED NOTES:

- THIS SECTION OF TRENCH DRAIN SHALL INCLUDE ONLY THE JAY R. SMITH MODEL 2720-04 AND SHALL INCLUDE ONE "A" SECTION AND TEN "B" SECTIONS WITH TWO END PLATES. LOCATE THE "A" SECTION WITH SEGMENT BUCKET IN THE CENTER WITH FIVE "B" SECTIONS ON BOTH SIDES OF THE "A" SECTION. TRENCH DRAIN SHALL BE INSTALLED IN A CONCRETE ENCASMENT AS SHOWN ON STRUCTURAL DETAIL 16/9-401. TOP OF TRENCH DRAIN GRATE SHALL BE FLUSH WITH TOP OF DEPRESSIONED CONCRETE TRENCH.
- TRENCHING, BEDDING & BACKFILLING FOR THE INSTALLATION OF UNDERGROUND PLASTIC STORM SEWER PIPING SHALL BE INSTALLED PER DETAIL 16/9-401. PROVIDE CAST IRON PIPING MATERIAL TO A POINT 4'-0" BEYOND LOWER BORE/OUTLET/CAMERA WELL/RETAINING WALL AND THEN TRANSITION TO PLASTIC PIPE.
- THIS COMPLETE SECTION OF TRENCH DRAIN SHALL BE JAY R. SMITH MODEL 2720-04 AND SHALL INCLUDE ONE "A" SECTION AND TEN "B" SECTIONS WITH TWO END PLATES. LOCATE THE "A" SECTION WITH SEGMENT BUCKET IN THE CENTER WITH FIVE "B" SECTIONS ON BOTH SIDES OF THE "A" SECTION. TRENCH DRAIN SHALL BE INSTALLED IN A CONCRETE ENCASMENT AS SHOWN ON STRUCTURAL DETAIL 16/9-401. TOP OF TRENCH DRAIN GRATE SHALL BE FLUSH WITH FINISHED RAMP ELEVATION.
- INVERT ELEVATION OF PIPE BELOW FOOTING IS 91'-5.42" (SITE). OFFSET WASTE PIPING ROUGH-IN FOR ADA ACCESSIBLE LAVATORY, L-3, FROM CENTERLINE OF FOOTING TO COMPLY WITH P-TRAP CONFIGURATION PER DETAIL 16/9-401.

HDR

HDR Architecture, Inc.

8404 Indian Hills Drive | Omaha, Nebraska 68114-4049 | 402.399.1000

POPULOUS™

300 WYANDOTTE, SUITE 300
KANSAS CITY, MO. 64105
(816)221-1500

DLR Group

Architecture
Engineering
Planning
Interiors

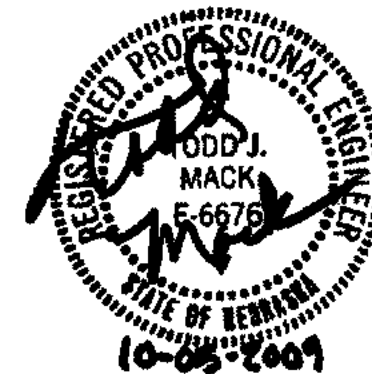
400 Essex Court Regency Park, Omaha, NE 68114-3778
tel: 402.953-4100 fax: 402.953-5747
omaha@dlrgroup.com

PROJECT DOCUMENTS FOR

MECA
OMAHA

Omaha Baseball Stadium
1200 Webster Street
Omaha, NE 68101

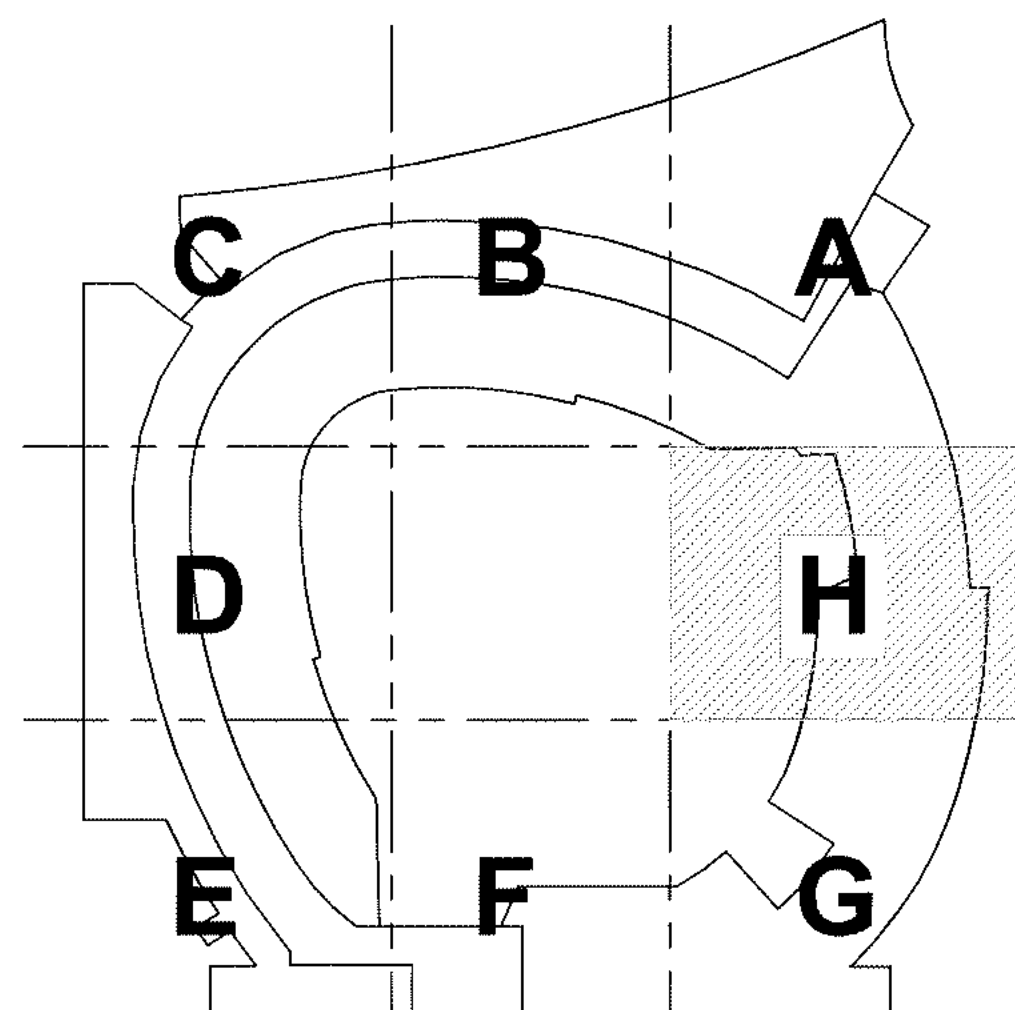
MARK	DATE	DESCRIPTION
1	APR 08, 2009	ISSUED PER BR-3
2	APR 20, 2009	ISSUED PER AD-3, BR-3
3	MAY 20, 2009	ISSUED PER AD-3, BR-3
4	JULY 15, 2009	ISSUED PER CD-3, BR-3
5	OCT 05, 2009	CH-3
6	DEC 10, 2009	RFI #222
PROJECT NUMBER HDR-4448208777, DLR 10.0142.00		
ISSUED BY HDR ARCHITECTURE		
PROJECT PRINCIPAL S. CARPENTER		
PROJECT MANAGER J. DINEEN		



AREA H
UNDERGROUND
PLUMBING PLAN

SCALE 1/8"=1'-0"

P-001H



KEY PLAN