

FALCON LIFTS A/S

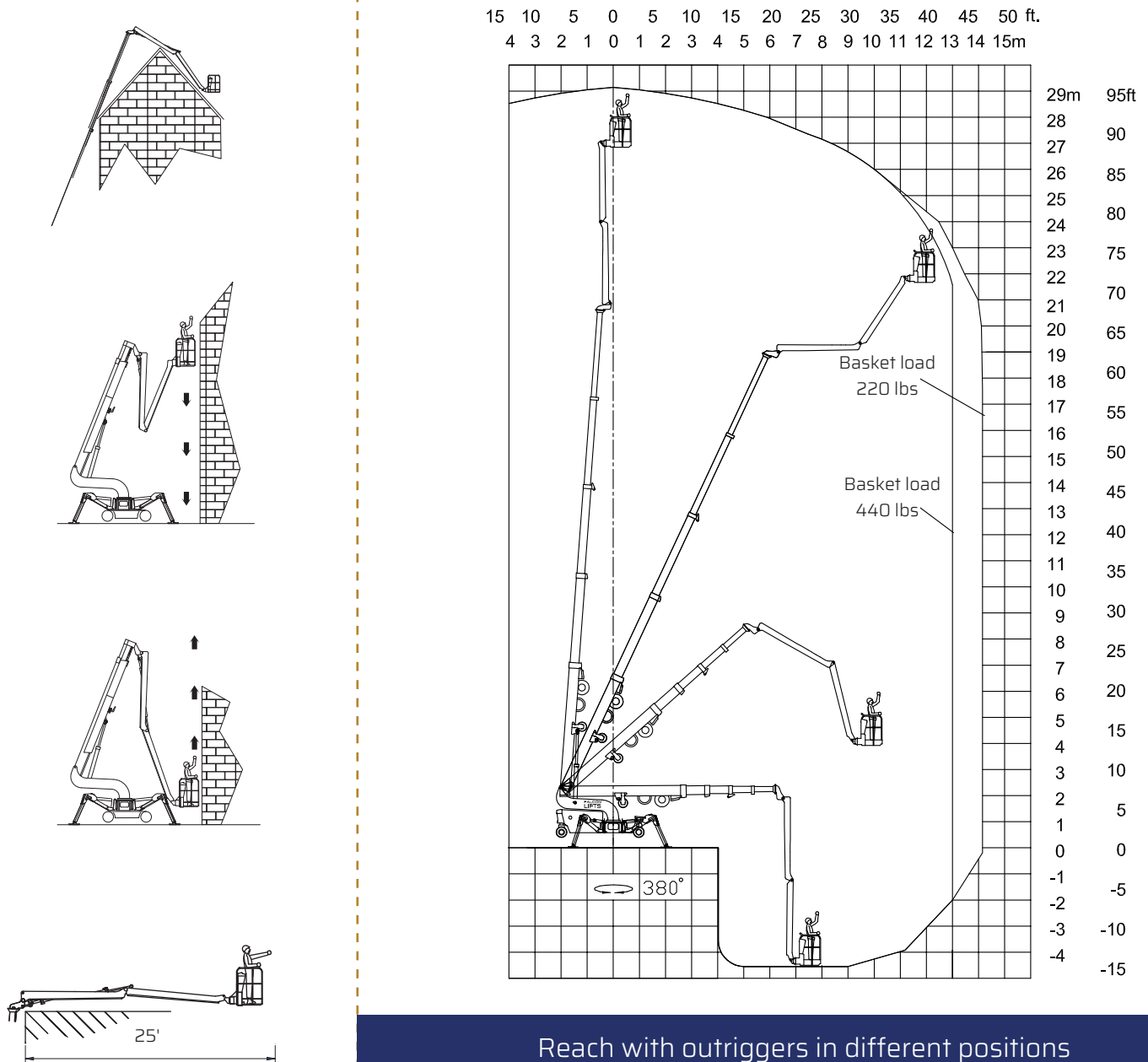
Tolderlundsvej 106  
DK-5000 Odense C  
Tel: +45 66 13 11 00

falconlifts.com

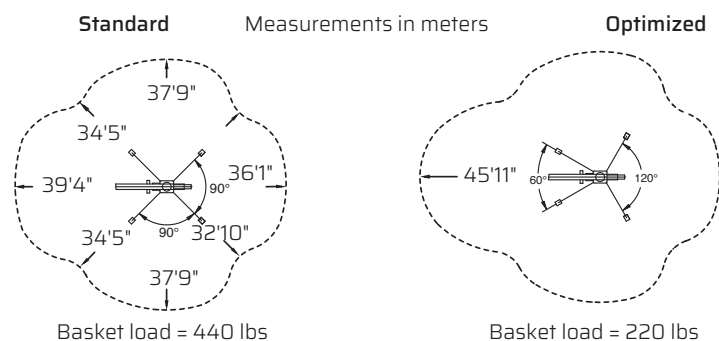


# FALCON FS 95

## Reach diagram - Optimized position



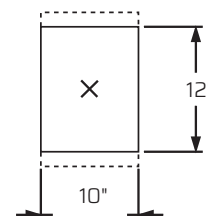
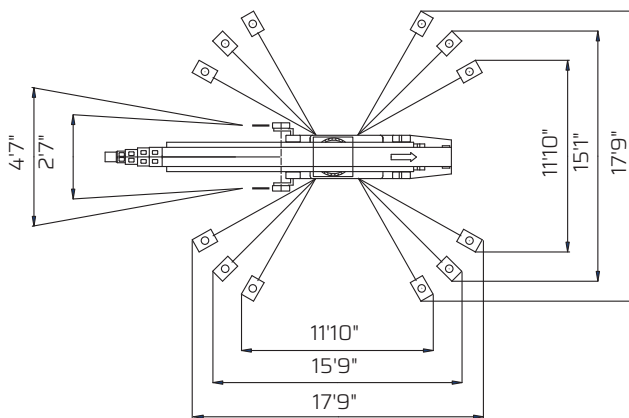
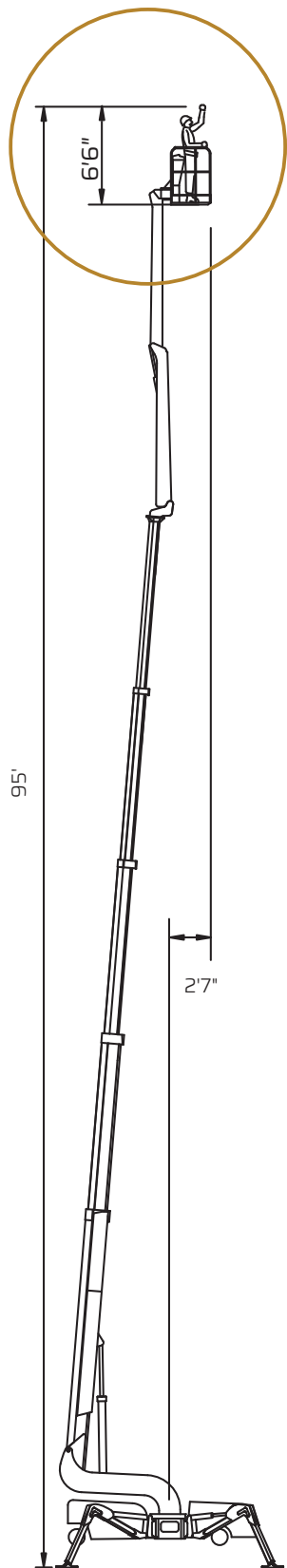
## Reach with outriggers in different positions



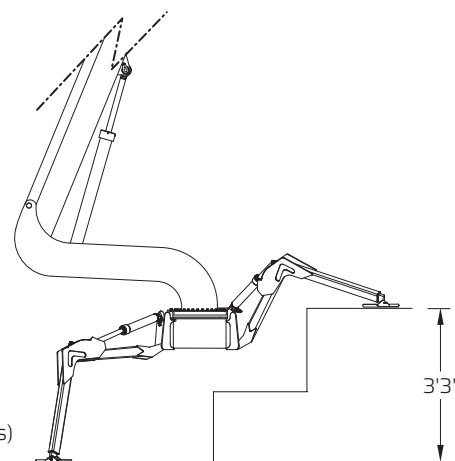
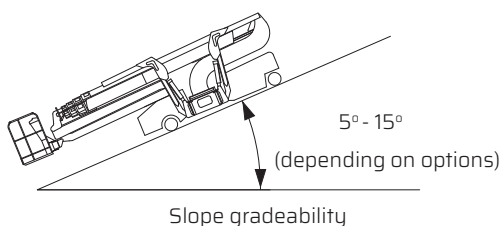
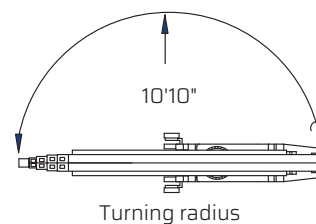
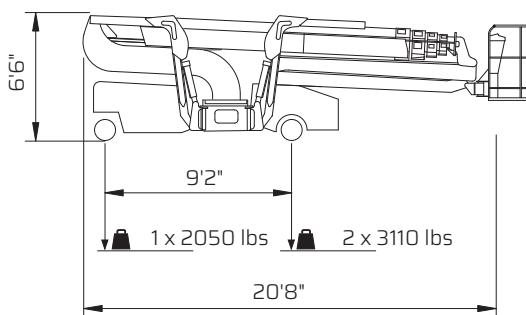
All measurements are intended as guide. Choise of equipment may change the mentioned measurements

# FALCON FS 95

## Outer measurements



Outrigger plate area  
= 124 in<sup>2</sup>



## Additional info:

### Weight and ground pressure:

Weight with standard equipment	8250 lbs
Max. ground pressure under 1 wheel	117 PSI
Max. ground pressure under 1 outrigger plate	34 PSI
Front wheel area (depending on wheel type)	1 x ~ 22 in <sup>2</sup>
Rear wheel area (depending on wheel type)	2 x ~ 27 in <sup>2</sup>

As all our products are in a constant process of development we reserve the right to alterations